



KONICA MINOLTA

Office System bizhub C450



bizhub C450

A colleague you can rely on

The essentials of imaging



The new colleague **is coming**



When the new colleague starts his job, the boss hopes he will be a fast and efficient productive worker. The other employees hope he will be easy to get along with. Everyone hopes he will be reliable.

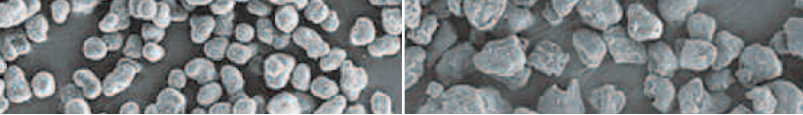
The bizhub C450 is the new colleague who will please everyone. Quality work, quick production, convenient to operate and extremely reliable.

It's the multifunctional communications centre of your office that keeps you in touch with near and far. It not only copies, prints, scans and faxes, but is also designed to simplify access and transmission of information. It broadens effectiveness and workflow and addresses many of your most important business needs – in full colour and black-and-white.

Take a look!

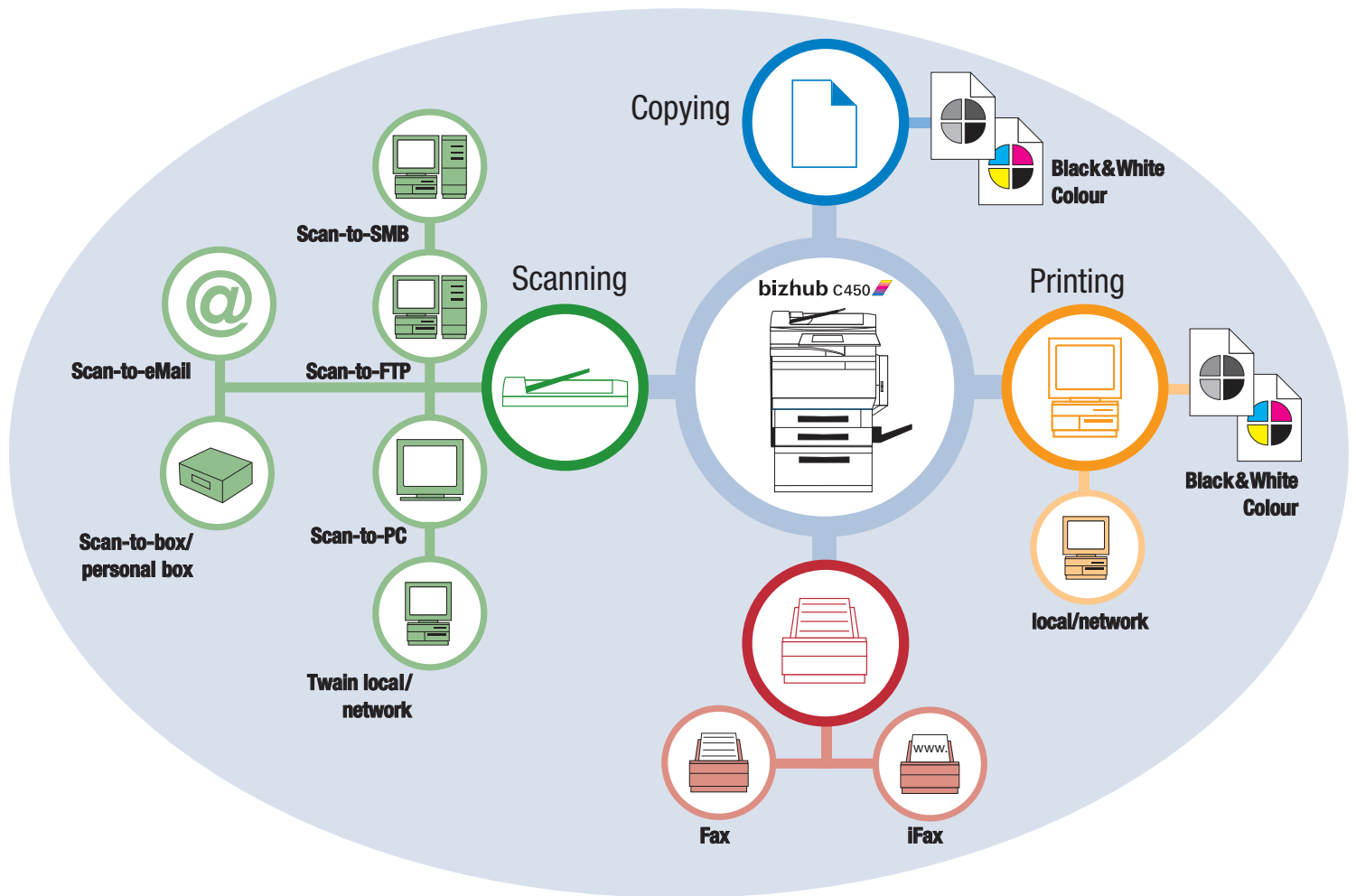
bizhub c450 





Simitri™ polymerised toner

Conventional toner



➔ Your new multitasking colleague

The new bizhub C450 can do a lot for you and your office.

Its exceptional and innovative technologies increase colour quality, versatility and reliability. Konica Minolta's Emperon™ print technology for example, a unique development based on our widespread experience in colour laser printers, represents a great step forward in the quest for image processing, speed and high-quality reproduction in multifunctional devices.

The unique PC-like Central Imaging Platform of the bizhub C450 encompasses many important functions and makes fast, stable processing of your information possible on one central base. And it's upgradeable, so you'll always be up-to-date in terms of functionality or additional product options.

The 4-colour tandem engine that improves effectiveness and quality by creating images in 1-pass, assures true and consistent colour for all your printing and copying requirements. And thanks to Konica Minolta's high-quality, low-consumption polymerised toner Simitri™, you'll get professional looking and cost-effective results from the first copy to the last.

LED technology is a guarantee of the efficiency and durability of your new colleague.

As the innovative technology of the bizhub C450 combines fewer mechanical parts, only minimal maintenance is necessary.





Like a good colleague, the bizhub C450 helps you to do



➔ Versatile, flexible, reliable

That's the kind of colleague you've always been looking for, right? Someone who is eager to take on new tasks and do them well. Look no further!

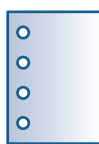
■ The bizhub C450 is a multifunctional device that does more than just communicate your information via copy, print, scan or fax.

■ And your new colleague helps you to realise your creative ideas: the bizhub C450 produces professional looking, high-quality publications for all purposes and occasions. Its finishing capabilities range from simple stapling to complete booklets with cover pages.

■ The bizhub C450 is a great communicator, too. There is no limit to the kinds of company newsletters, financial reports, marketing, advertising and sales material that you can easily and



combined
mixmedia/mixplex



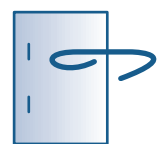
four-hole
punching



booklet maker
(folding and stapling)



duplex printing



stapling
(standard)



Like any good colleague, the flexible bizhub C450 fits easily into any office environment.

- It shares documents and all standard printed matter needed daily in various departments, like travel expense forms. No need to have thousands of expensive, professionally printed business forms made in advance that have to be stored somewhere: your new colleague has them all at hand in a public document box. Company letterheads can also be stored and overlaid when you need them. There's no need to insert pre-printed paper for your letters and documents, so your data can always be kept up to date.
- Your new colleague has a good memory, too: 40 GB memory to be exact. This means that you can store the information you need to have at hand, like e-mail addresses, fax numbers, scan, copy and print settings. You can also access the company address book via LDAP technology, making time-consuming searches obsolete. And thanks to its "personal box", scans, faxes, prints and copy jobs can be stored and accessed for quick use.
- For your network security, the bizhub C450 can be set-up with Active Directory support allowing you to login with your personal PC user name and password, so you don't have to remember more passwords than necessary. In addition, the ISO 15408 EAL 3 security features ensure that your confidential documents remain confidential.
- Because it can produce high-quality duplex results on cheaper black-and-white paper, the bizhub C450 is a cost-effective choice that also conserves energy and material resources.

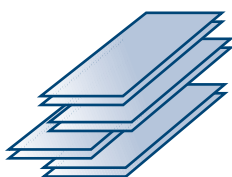
your best

flexibly produce.

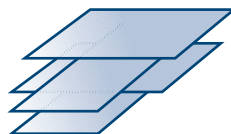
- Its unique PDF compression capabilities simplifies the sharing of scanned documents with customers and business partners around the world via e-mail.
- Standard printed matter carrying your trademark and message: envelopes, business cards and postcard mailings on paper up to 256 g/m² and compact disc labels are just some of its many features designed to keep your effectiveness up and your costs down.
- And with Proof Print and Proof Copy, you can check the results before you start a large print run, ensuring that you get what you expect.



left top
corner stapling



offset sorting



criss-cross sorting





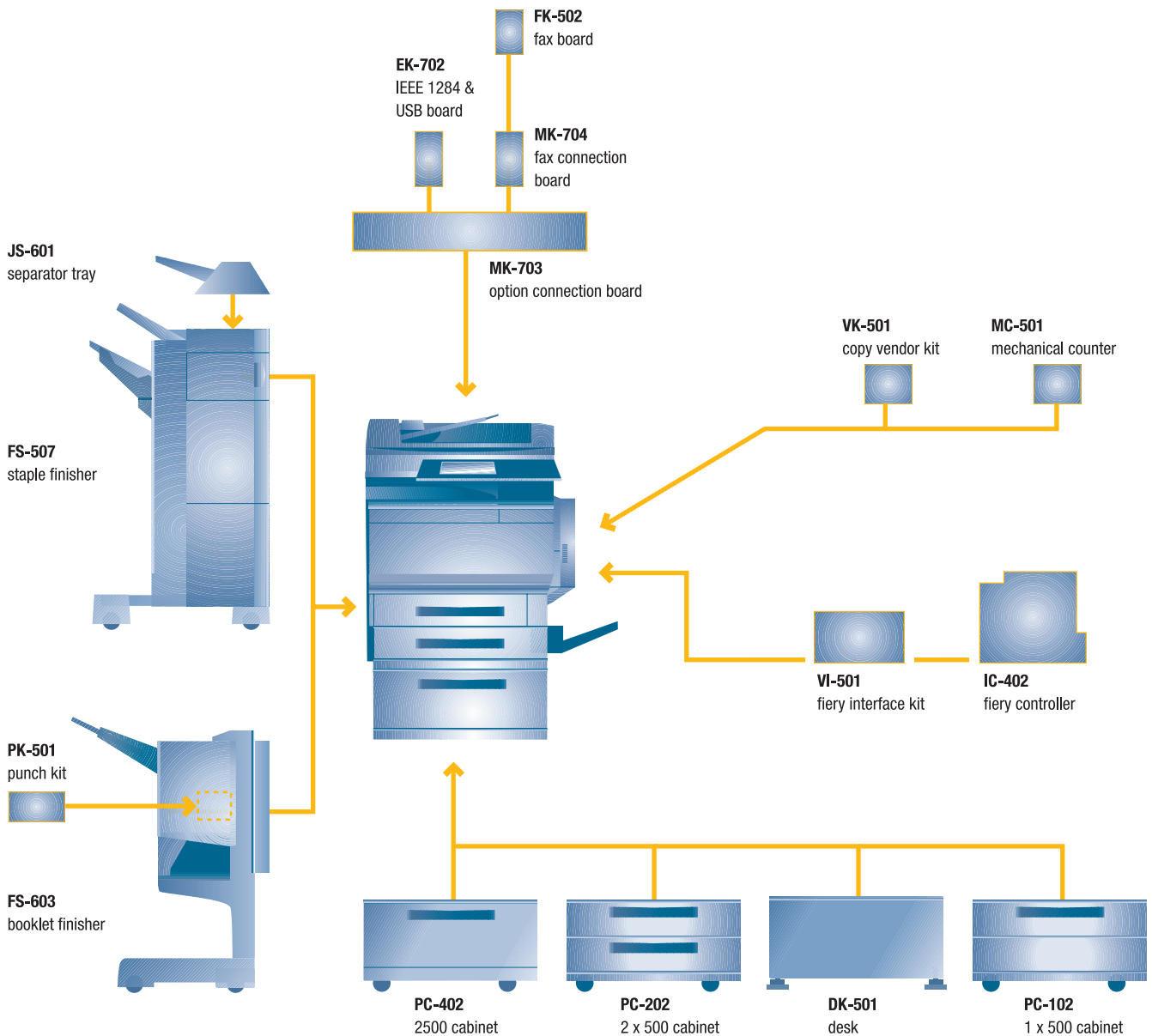
Your advantages **at a glance**

- Upgrading your office communications with the multifunctional bizhub C450 is like hiring a new multitalented employee. He can perform many different tasks skilfully and reliably.
- Perhaps the only problem is that the new bizhub C450 makes some older colleagues redundant, like the many slower desktop ink and laser printers still around your office. It has more than enough resources to take over their jobs, too.
- The bizhub C450 is a prime example of our long-time expertise in colour multifunctional devices that recently received the BERTL Reader's Gold Reliability Award.
- At Konica Minolta, quality and reliability go hand in hand. As a new member of your team, the bizhub C450 works hard and delivers top results quickly and efficiently. And it's always there when you need it.



The bizhub C450

Optional features





KONICA MINOLTA

Simitri



Technical specifications

Copier specification

Copying system

Tandem type
Indirect electrophotographic

Toner system

Simitri™ polymerised toner

Copy/print speed A4

Colour up to 35 cpm
Mono up to 45 cpm

Copy/print speed A3

Colour up to 19 cpm
Mono up to 24 cpm

1st copy/print time

Colour 8.5 sec. (A4)
Mono 5.5 sec. (A4)

Warm-up time

Less than 99 sec. (timer function)

Copy resolution

600 x 600 dpi

Gradation

256 gradations

Multicopy

1–999, interruption mode

Copy original format

A5–A3

Magnification

25–400% in 0,1% steps

Copier memory

1024 MB

Copier hard disk

40 GB

Copy features

Chapter and cover mode, proof copy, adjustment test print, glossy mode, colour adjustment, digital art, job recall, job setting memory

Printer specification

Print resolution

Max. 600 x 1,800 dpi

Controller CPU

PowerPC750FX @ 600 MHz

Page description language

PCL 6c (PCL 5c + XL 2.1), PostScript 3

Operating systems

Windows 98/ME/NT4.0/2000/XP
Macintosh 9.x/10.x
Server NT4.0/2000/2003
Unix, Citrix

Interface

10/100 Base-T Ethernet
USB 2.0 (optional)
IEEE 1284 (optional)

Print memory

1024 MB (copier shared)

Print hard disk

40 GB (copier shared)

Scan specification

Scan speed

Up to 38 scans/min (A4)

Scan resolution

Max. 600 x 600 dpi

Scan modes

TWAIN scan, Scan-to-eMail,
Scan-to-FTP, Scan-to-SMB,
Scan-to-Box, Scan-to-iFax

File formats

JPEG, TIFF, PDF, Compact PDF

Scan destinations

2100 (single + group), LDAP support

Fax specification (optional)

Fax standard

Super G3

Fax resolution

Max. 600 x 600 dpi (ultrafine)

Fax compression

MH, MR, MMH, JBIG

Fax baud rate

Up to 33.6 Kbps

Fax destinations

1000 (single + group)

Fax functions

Polling, time shift, email reroute,
receipt to confidential box, PC fax

System specification

Automatic document feeder

Up to 100 originals

Printable size

A6–A3 full bleed,
Customised paper sizes

Paper weight

64–256 g/m² (from all paper trays)

Paper input capacity

Standard 900 sheets, max. 3,400 sheets

Output capacity

Up to 3,250 sheets

Automatic duplexing

A5–A3 full bleed, 64–256 g/m²

Power consumption

220–240 V / 50 Hz
1.5 KW or less

System dimension (WxDxH mm)

706 x 765 x 908

System weight

Approx. 125 kg

System features

Security

Embedded firewall (IP filtering)
HDD/memory erase
Secure printing (lock job)
User authentication
Unauthorised access lock*
*(after three incorrect attempts)

Accounting

1,000 user accounts
Active directory support
(username + password)
User functions access definable

Software

PageScope NetCare
PageScope Cabinet
PageScope NetSetup
PageScope Data-Administrator
PageScope Box Utility
PageScope Spooler

All specifications relating to paper capacity refer to A4-sized paper of 80 g/m² quality.

All specifications relating to scanning, copying or printing speeds refer to A4-sized paper that is scanned, copied or printed crosswise in multipage, simplex mode.

The memory capacities listed refer to A4-sized paper with the toner coverage detailed in the respective footnote.

Some of the product illustrations contain optional accessories.

Konica Minolta does not warrant that any prices or specifications mentioned will be error-free.

Specifications are subject to change without notice.

Microsoft, Windows, and the Windows logo are trademarks, or registered trademarks of Microsoft Corporation in the United States and/or other countries.

All other brand and product names may be registered trademarks or trademarks of their respective holders and are hereby acknowledged.

Printed in UK.

Konica Minolta
Business Solutions (UK) Ltd

Direct Operations
Miles Gray Road, Basildon
Essex SS14 3AR
Tel: 0800 833864
Fax: 01268 282480
www.konicaminolta.co.uk