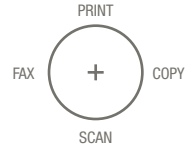




KONICA MINOLTA

## THE COLOR AND B&W SOLUTION YOU'VE BEEN WAITING FOR.

With 25 ppm output in both color and B&W, the bizhub C252 moves information faster from a central document resource. You can produce high-impact documents in-house and on-demand, with advanced print control, standard duplexing, versatile paper handling and intelligent bypass. A modular finisher can be configured to suit your workflow – including 60-page and legal-size booklet-making, plus a booklet finisher for high-demand booklet applications. And advanced security features safeguard your information. The business world is moving to color – and to keep you a step ahead, the bizhub C252 is a cost-effective, all-in-one replacement for your current document system.



DO BUSINESS BETTER

25 PPM 25 PPM

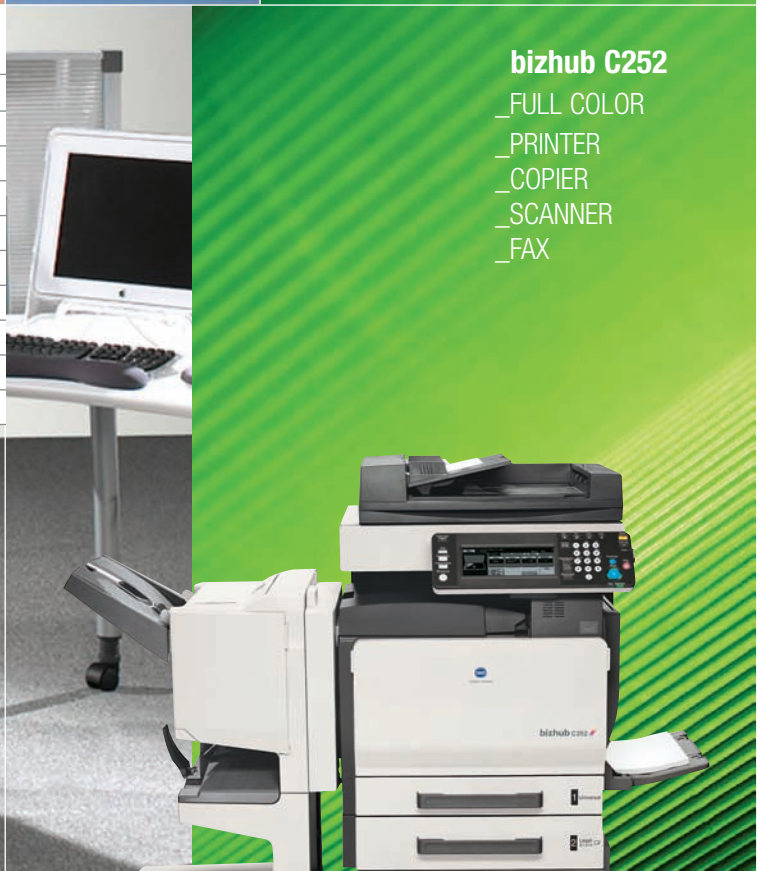
CONNECT

COMMUNICATE

CONTROL

## bizhub C252

- ▶ HIGH-SPEED 25 PPM OUTPUT IN BOTH COLOR AND B&W
- ▶ HIGH-VOLUME 75,000 PAGE-PER-MONTH DUTY CYCLE
- ▶ EMPERON™ PRINT SYSTEM WITH PCL 5E/5C, PCL 6, PS 3 EMULATION
- ▶ SCAN TO EMAIL, FTP, SMB (DESKTOP), USER BOX (40 GB HDD)
- ▶ ADVANCED SECURITY, HDD PROTECTION, ISO 15408 COMPLIANCE\*
- ▶ STANDARD AUTO DUPLEXING – UP TO 140 LB. INDEX STOCK
- ▶ INTELLIGENT BYPASS FOR LOADING SPECIAL PAPERS
- ▶ 12" X 18" PRINTS OF FULL-BLEED 11" X 17" ORIGINALS
- ▶ CUSTOM FINISHING: MODULAR FINISHER PLUS BOOKLET FINISHER
- ▶ SUPER G3 FAX OPTION WITH OPTIONAL DUAL-LINE SUPPORT



bizhub C252  
\_FULL COLOR  
\_PRINTER  
\_COPIER  
\_SCANNER  
\_FAX

The essentials of imaging

## KONICA MINOLTA bizhub C252

**Economical B&W printing.** A large-capacity B&W toner cartridge yields more economical everyday monochrome printing to lower your total cost of ownership – and quick-copy user interface keeps documents flowing.

**Emperon™ Print System.** Print control is built in, with simple user interface for desktop print/scan control and PCL 5e/5c, PCL 6 and PostScript 3 emulation for both PC and Mac compatibility.

**Industry-leading scan functionality.** Speed document distribution with Scan-to-Email, Scan-to-FTP, Scan-to-SMB (Scan-to-Desktop), TWAIN scanning.

**Scan-to-HDD (Scan-to-User Box).** Lets you save, print, route, move and copy documents to any of 1,000 secure mailboxes on your built-in 40 GB hard drive.

**LDAP support.** Lets you integrate addressing with up to 5 LDAP servers.

**Compact PDF workflow.** Smaller scan file size can speed your workflow – with improved scan image to preserve more text and visual information.

**Powerful security protection.** Safeguard valuable data with HDD Sanitizing, Job Erase, Password Lock, SSL password encryption, IP Address Filtering, User Authentication, Box Operation Password and Secure Print Protection.

**The latest security enhancements.** ISO 15408 compliance\*, eight HDD overwrite modes, HDD Sanitizing, copy protection with security watermarks, three-pass job erase, three-try lockout to guard against unauthorized equipment use, support for multiple user domains in Active Directory Authentication, and optional HDD Encryption Kit.

**Versatile paper handling.** High 3,350-sheet paper capacity, with the ability to load up to 140 lb. index stock via multi-purpose cassette and bypass tray, auto-duplex 140 lb. stock, print on envelopes or coated paper, and output 11" x 17" originals on 12" x 18" paper to preserve color bars, crop marks and margins.

**Advanced printing capabilities.** Boost productivity with full-color banner printing up to 47-1/4" in length, N-up printing (2-in-1, 4-in-1, 9-in-1 or 16-in-1), Program Job (job building), mixed originals stacking and sorting.

**High-volume Super G3 fax option.** With automatic fax forwarding to Email addresses, SMB, FTP and User Box – plus Internet Fax, IP Address Fax, registration for up to 20 fax headers, up to 2,000 multi-address locations, speed-dialing, broadcasting, program dialing and other advanced features.

\* In evaluation.

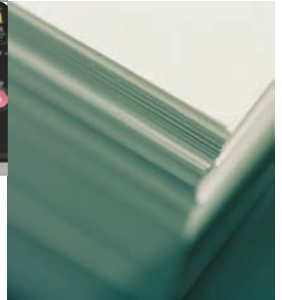
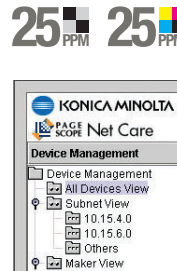
**THE POWER OF BIZHUB™ OP.** COMBINES BIZHUB ARCHITECTURE TO RUN ALL FUNCTIONS ON ONE CPU AND MEMORY SUBSYSTEM, THE EMPERON™ PRINT SYSTEM FOR INTEGRATED PRINT/SCAN PRODUCTIVITY, AND BIZHUB OPEN API FOR CUSTOM INTEGRATED SOLUTIONS.

### FAST COLOR OUTPUT AT AFFORDABLE COST.

AMONG THE SMALLEST 11" X 17" COLOR TANDEM PRINTERS IN THE INDUSTRY – WITH ALL-IN-ONE DESIGN TO REPLACE REDUNDANT EQUIPMENT, FAST 25 PPM OUTPUT SPEED IN BOTH COLOR AND B&W, ROBUST 75,000 PAGE-PER-MONTH DUTY CYCLE FOR WORKHORSE PRODUCTIVITY.



**PAGESCOPE™ SOFTWARE SUITE.** PROVIDES SEAMLESS INTERFACE TO BIZHUB C252 HARDWARE FUNCTIONS, LETS YOU CONTROL MULTIPLE BIZHUB AND MIB-COMPLIANT DEVICES FROM A SINGLE POINT, AND INTEGRATES ADDRESS, SECURITY AND ADMINISTRATIVE DATA WITH EXISTING SYSTEMS – INCLUDING PAGESCOPE PLUG-IN FOR WEB JET ADMIN MANAGEMENT.

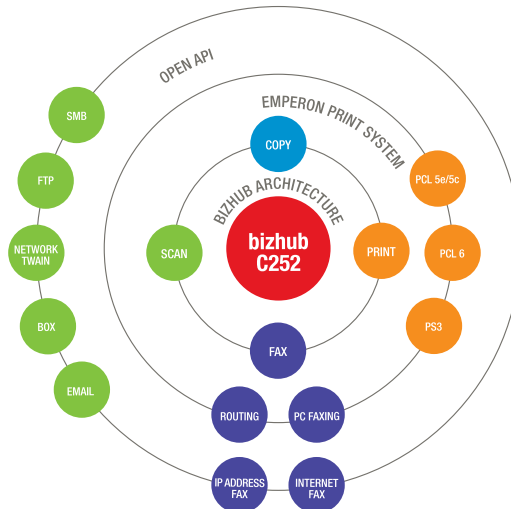


### FINISHING OPTIONS

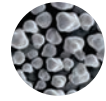
- ▶ LEFT TOP STAPLING
- ▶ 2-POSITION STAPLING
- ▶ 2/3-HOLE PUNCHING
- ▶ BOOKLET MAKING
- ▶ SHEET INSERTION

### OPTIONAL MODULAR FINISHERS.

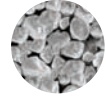
MODULAR FINISHER LETS YOU CUSTOMIZE YOUR WORKFLOW WITH 60-PAGE BOOKLET-MAKING, LEGAL-SIZE BOOKLETS, CREASE-FOLDING, CENTER-STAPLING, HOLE-PUNCHING, GROUPING AND SORTING; BOOKLET FINISHER IS EQUIPPED WITH ADVANCED FEATURES THAT INCLUDE HOLE-PUNCHING, FOLDING, AND SADDLE-STITCHING SO YOU CAN TAKE ON COMPLETE BOOKLET PRODUCTION.



SIMITRI®



PULVERIZED



**HIGH-QUALITY COLOR IMAGING.** EXCLUSIVE KONICA MINOLTA SIMITRI® COLOR POLYMERIZED TONER GIVES PRINTS AND COPIES CLEAN, CRISP IMAGE DETAIL – AND NEWLY DESIGNED CMYK IMAGING UNITS CREATE SPECTACULAR COLOR HALFTONES.

**bizhub**



© 2006 KONICA MINOLTA BUSINESS SOLUTIONS U.S.A., INC. All rights reserved. Reproduction in whole or in part without written permission is prohibited. Konica Minolta and The essentials of imaging are trademarks of KONICA MINOLTA HOLDINGS, INC. bizhub, Emperon, and PageScope are trademarks of KONICA MINOLTA BUSINESS TECHNOLOGIES, INC. Simitri is a registered trademark of KONICA MINOLTA BUSINESS SOLUTIONS. All other brands and product names are registered trademarks or trademarks of their respective owners.

Design & specifications are subject to change without notice.

Some functions may require options, which may or may not be available at time of launch.



**KONICA MINOLTA**

**KONICA MINOLTA BUSINESS SOLUTIONS U.S.A., INC.**

100 Williams Drive  
Ramsey, NJ 07446

[www.kmbs.konicaminolta.us](http://www.kmbs.konicaminolta.us)  
[www.kmbs.konicaminolta.us/solutions](http://www.kmbs.konicaminolta.us/solutions)